



# NEWSLETTER

No.111

MARCH 2021

[www.watersidewoodcarvers.co.uk](http://www.watersidewoodcarvers.co.uk)

## COMMITTEE CHIPPINGS

Well, after a year of varying restrictions – and almost no carving club activity – there is light ahead. We hope that you have come through this ordeal intact, are well and keen to get back to carving sessions. Many of us have already had our first Covid vaccine and by the end of June may we'll have had both. With the gradual lifting of restrictions, your committee has come up with a plan:-

**MARCH**. Regular ZOOM meetings have been set up by Lesley, starting 4<sup>th</sup> March and running every other Thursday evening at 7pm, just like club workshops at Applemore, only without the benches and tools. Do join in if you wish. If there is a demand, we could introduce themes for some sessions.

**APRIL and MAY**. As groups of up to 6 can meet outdoors from the end of March, we propose holding carve-ins at Mary's barn in Holbury (123 Rolleston Rd) starting on Sat 10 April, 10am-3pm, and then every other Saturday until we can meet again in Applemore College. Clearly, until restrictions are fully lifted, anyone coming to the barn must stay in a group of 6 or less and not mingle. Club tools will be available to use – by one person only per day. And if you need a stool, chair or bench, you will need to bring your own. These dates will appear on the club website events page.

**JUNE**. The planned social on 20 March and fallback option on 17 April have been cancelled. The June social was originally booked for Fri 18 but has been moved back to **Fri 25 June, 7-9pm at St Andrews, Dibden Purlieu in the Garden Lounge**. This will be our first social for over a year and will be used as our **AGM, Trophy night (for 2 year's worth of carvings!) and the Woodblock Challenge**. There will be a separate category for Novice carvers (we suggest those carving for 3 years or less, but it's up to you), so we are expecting a bumper display of amazing carvings. Please remember to re-join the club with an annual subscription of £10, either online to Waterside Woodcarvers, sort code 60-20-40, account no 61264490 or post a cheque, made out to Waterside Woodcarvers, to Kathy Hammond, 26 Corsair Drive, Hythe, Southampton, SO45 5UF.

Cont.

We have taken a good look at our constitution (currently on the club website) and the committee will be putting forward proposals for some significant changes at the AGM for you to vote on. Proposals will be circulated to paid-up members a week before the AGM.

So I am looking forward to meeting up with you in the near future, virtually or in person, and definitely looking forward to seeing all the carvings on 25 June. Roll on summer!

Di Smith, Chair, email [dianasmith291@btinternet.com](mailto:dianasmith291@btinternet.com) tel. 02380 845787



"Apparently, they're all hibernating until at least the spring"

## WHAT HAVE YOU BEEN UP TO?

A little look at what sort of things our members have been doing to stave off the boredom of lockdown.



These four are all the work of Margaret Bricknell



Allan Mechen writes:

This is what I call my "Gallery tankard". It is made in eight separate segments which only came together when they were all completed. Drawing and execution needed to be pretty accurate. The hole at the bottom was plugged when all parts were glued together and the octagonal inside was rounded.





This page is from Roger. He says that the storks are blanks which we can carve in a day when we get back together again.



*"When this is all over I propose we go out and get totally sober"*



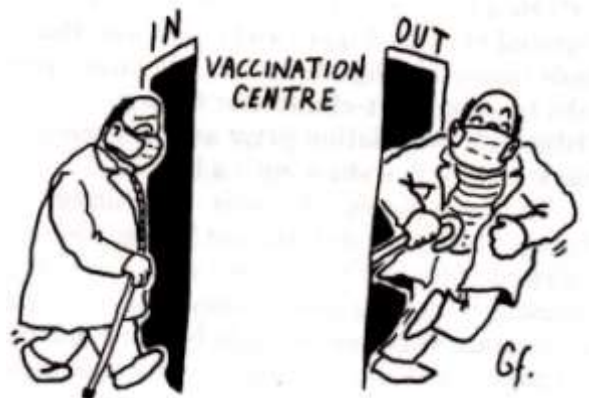
*"Cheers, that'll be a pair of socks, saves me going all the way upstairs to get some out of a drawer"*



*"Was there a time before this?"*



*"It's takeaway coffee, not a picnic"*



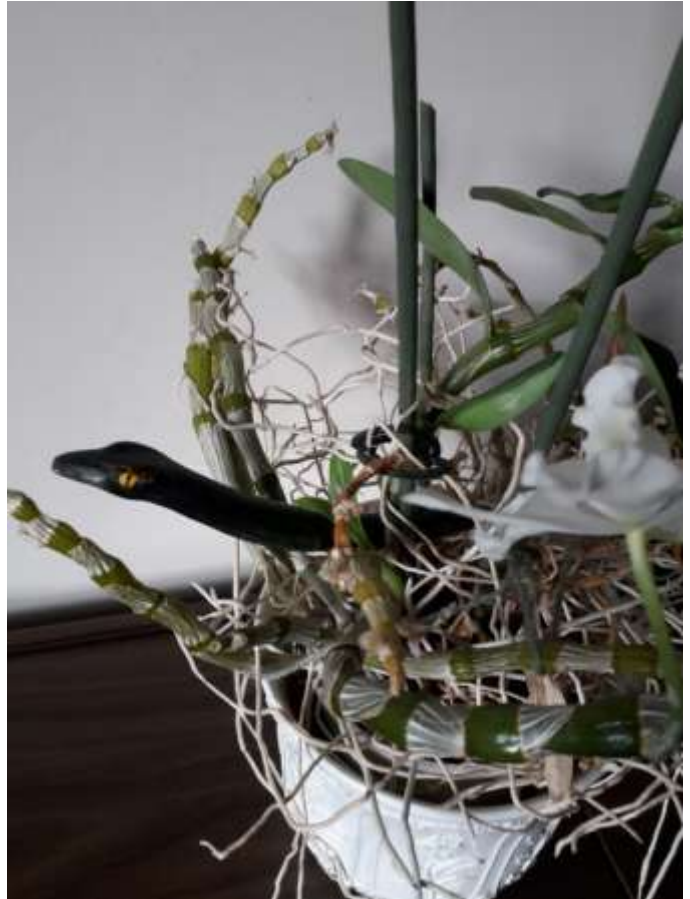
## Green Wood Snake

Walking through deciduous woodland you sometimes come across a piece of wood turned blue-green by a fungus (*Chlorociboria aeruginascens*). Sometimes you can be lucky enough to see the tiny green fruiting bodies called Green elf cups. Usually the wood is soft or rotten but occasionally I find a piece that is still firm. Even so, such pieces are usually small and in the past small slivers were used in Tonbridgeware to add colour to inlaid wood decoration.

A few years ago I used such a piece to make a small love spoon as a wedding gift.

More recently I have been whittling a fungus-stained stick and made a 'Green Wood Snake'. Finishing it with Danish Oil has really brought out the deep green colour.

Di Smith



This is what Jake is working on at the moment

A beautiful hare from Maggie Port



These are from your editor. I showed you the fish in a previous edition but was stuck for a base. I then found a nice piece of wavy yew to make a wall plaque of them.



I've also done a couple of leaf bowls, one in chestnut and one in oak





## **DRYING WOOD**

At a recent zoom committee meeting it was said that some members had been asking about the drying of wood to make it ready for carving. So here is a short item on what to do if you have received some recently cut logs.

Act fast - the wood starts to lose moisture as soon as it is cut. I know that is what we want but if it happens too quickly there is a risk of splitting.

In my experience it pays to split the log down the middle to greatly reduce the chance of splitting. I know that this halves the size of wood you end up with but looking on the bright side it also halves the drying time since you should allow approximately one year for every inch of thickness.

Stop the ends with candle wax, paraffin wax or thick paint of some sort; this stops the rapid drying through the ends which can be ten times faster than drying through the sides.

Remove the bark. This allows drying through the sides and also gets rid of any bugs which may be lurking under it and which may damage your finished timber.

Store your wood in a dry but well ventilated location.

If you want to check the dryness of your wood you can use a moisture meter. There is no hard and fast rule about how much moisture is present – that depends on all sorts of factors. It is about the figure remaining stable over a period of weeks.

As with everything else in this digital age, there is a wealth of information on this topic on Youtube. Hope this helps.

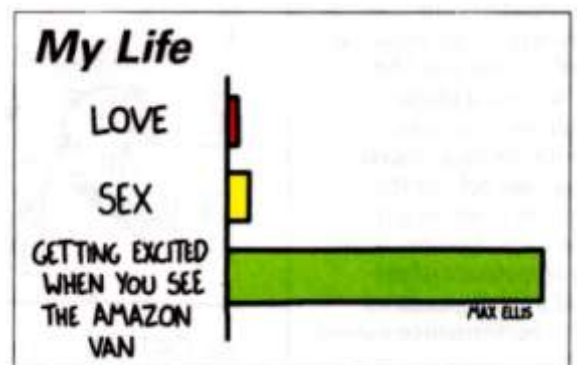
## **SHIRTS**

At the next carve-in (Whenever that is) we will be bringing along some of the club shirts. The club subsidises the cost of each item by £4.00 therefore the cost to you would be sweatshirts £13.00 and polo shirts £10.00. The chart below will give you an idea of the measurements. If you cannot make the carve-in but would like to order a shirt, please contact Pippa on 02380 207717 or [pippasmith28@gmail.com](mailto:pippasmith28@gmail.com)

<b>Sweatshirts</b>		
	Chest	Length
Small	19.5 ins. 50cm	26.5 ins. 67cm
Medium	22.5 ins. 57cm	27.5 ins. 69cm
Large	24.5 ins. 61cm	28.5 ins. 72cm
<b>Polo Shirts</b>		
	Chest	Length
Small	21 ins. 53cm	27 ins. 69cm
Medium	22.5 ins 56cm	28 ins. 71.5cm
Large	24 ins. 60cm	29 ins. 74cm
X Large	25 ins. 63cm	31 ins. 79cm



The new work/life balance



**FORTHCOMING EVENTS** – notes for your diary

It obviously goes without saying that any of this could change.

**MARCH**

Thursday 18<sup>th</sup> .....Zoom meeting 7.00pm

**APRIL**

Thursday 1st.....Zoom meeting 7.00pm

Saturday 10th.....Carve-in Mary’s barn 10am – 3pm

Thursday 15th.....Zoom meeting 7.00pm

Saturday 24th.....Carve-in Mary’s barn 10am – 3pm

Thursday 29th.....Zoom meeting 7.00pm

**MAY**

Saturday 8th.....Carve-in Mary’s barn 10am – 3pm

Thursday 13th.....Zoom meeting 7.00pm

Saturday 22nd.....Carve-in Mary’s barn 10am – 3pm

**JUNE**

Saturday 5th.....Carve-in Mary’s barn 10am – 3pm

Saturday 19th.....Carve-in Mary’s barn 10am – 3pm

Friday 25th.....Social/AGM/Trophy Night/Woodblock 7pm - 9pm  
St.Andrews



*"People say nothing is impossible, but I do nothing every day."*

A.A.Milne

